



LEMIEUX

ET CIE

YORK[®]
WALLCOVERINGS



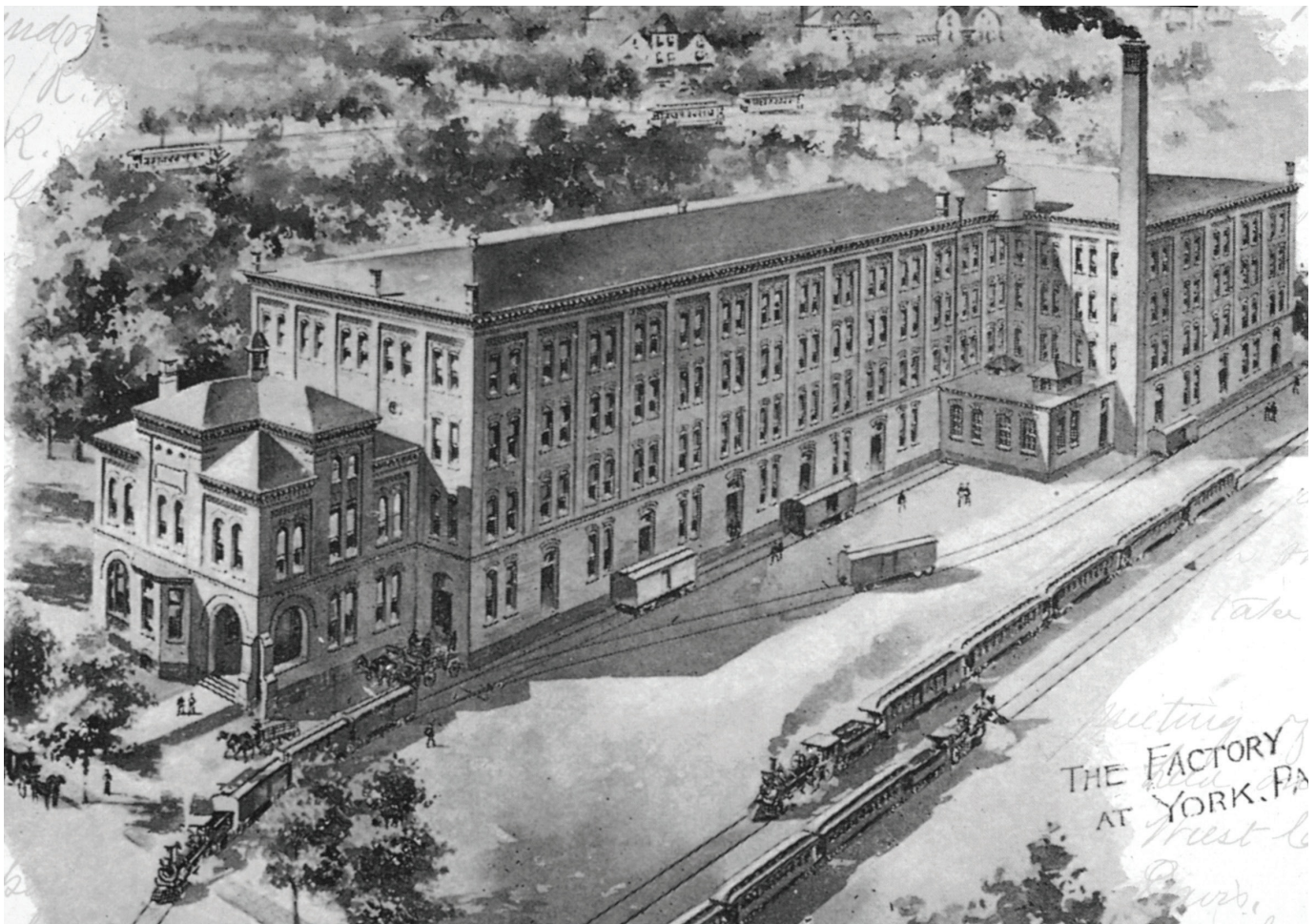


LEMIEUX

ET CIE

CHRISTIANE LEMIEUX IS THE CREATIVE FORCE BEHIND HER ASSEMBLAGE OF LIFESTYLE BRANDS. EVERY DETAIL WITHIN HER COLLECTIONS HAS A SENSE OF CASUAL AFFLUENCE AND WELL-TRAVELED TASTE. IMBUED WITH HER UNIQUE DESIGN SIGNATURE, THEY ARE DISTINCTIVE YET APPROACHABLE, REFINED BY CURATION, AND ENRICHED WITH A SENSE OF EFFORTLESS STYLE.

LEMIEUX ET CIE IS LUXURY IN PERFECT MINIMALISM, EDITED TO BE RICHLY LAYERED, YET EFFORTLESSLY RELAXED. THIS IS DEEPLY PERSONAL STYLE BUILT ON AN OBSESSIVE DEDICATION TO QUALITY, CRAFTSMANSHIP, AND THE PERFECTION FOUND IN THE IMPERFECT.



YORK WALLCOVERINGS FACTORY 1900s

DESIGNED TO INSPIRE

YORK WALLCOVERINGS' FAMILY OF EMPLOYEES HAVE AN INTEGRITY AND COMMITMENT TO SERVICE AND QUALITY UNSURPASSED IN THE WALLCOVERING INDUSTRY. YORK STANDS ALONE IN EXPERIENCE AND KNOWLEDGE AMONG ITS PEERS.

OUR AUTHENTIC HANDCRAFTING AND ARTISANSHIP DATES BACK OVER MORE THAN A CENTURY. IT IS THIS DESIGN HERITAGE, WORKING HAND IN HAND WITH THE LATEST IN MODERN TECHNOLOGIES, WHICH DEFINES YORK WALLCOVERINGS' PORTFOLIO AS THE MOST DIVERSE WITHIN THE WALLPAPER INDUSTRY TODAY.

BY REIMAGINING CENTURIES OLD ARTISAN HANDCRAFTING AND AUTHENTIC TECHNIQUES THROUGH MODERN INNOVATION, CREATIVITY TOUCHES EVERY PART OF THE YORK MANUFACTURING PROCESS.



DESIGN & MANUFACTURING

LONG RECOGNIZED FOR ITS COLLECTIVE TALENT, YORK WALLCOVERINGS' DESIGN STUDIO MAINTAINS A REPUTATION FOR INNOVATIVE STYLING AND FINE ARTISTRY, HAVING EXTENSIVE DESIGN EXPERTISE IN ALL WALLCOVERING PRODUCT TYPES INCLUDING RESIDENTIAL, COMMERCIAL, HIGH PERFORMANCE, ACOUSTICAL AND PEEL AND STICK. YORK'S CREATIVE STUDIO STAFF IS IN THE UNIQUE POSITION TO LAYER DESIGN TECHNOLOGIES AND MANUFACTURING TECHNIQUES TO BRING THEIR VISION TO PRINT REALITY.

AS THE EXCLUSIVE PROVIDER OF RARE SURFACE PRINT TECHNOLOGIES IN NORTH AMERICA, AND THE ONLY MANUFACTURER WITH ALL FIVE WALLPAPER PRINTING TYPES HOUSED UNDER ONE ROOF, YORK FINDS ITSELF AS THE PREEMINENT AUTHORITY ON WALLPAPER PRINTING IN THE UNITED STATES.

IT IS THIS DESIGN HERITAGE WHICH INFORMS YORK'S VISIONARY ADAPTABILITY AND RESILIENCE, WITHSTANDING THE TEST OF TIME, AND STEADFAST IN DEDICATION TO EXCELLENCE OF DESIGN AND INDUSTRY WITH A FOCUS ON THE FUTURE.

FERRANDI

REPRESENTATIVE OF YIN AND YANG, A FIERCE
AMBUSH OF TIBETAN TIGERS PROWL THROUGH
AN ARTISANAL LANDSCAPE STREWN WITH
WILDFLOWERS IN PATTERN FERRANDI.





FERRANDI



CH1420



CH1421 - SHOWN ON OPPOSITE PAGE

REPEAT 20.25 IN (51,43 CM) - ROLL WIDTH 27 IN (68,58 CM) - ROLL LENGTH 27 FT (8,22 M)

SURE STRIP® - PRICE CODE A



©2021 LEMIEUX ET CIE®. ALL RIGHTS RESERVED.

BARBIER

THE HAND-SKETCHED RENDERING OF A CREWEL EMBROIDERY
IN PATTERN BARBIER FLOATS DREAMILY AMONG CLOUDS OF
WATERCOLOR, BRINGING VINTAGE SOPHISTICATION TO THIS
CLASSIC LEAF AND VINE.



CH1425



CH1426 - SHOWN ON
OPPOSITE PAGE



CH1427

REPEAT 18 IN (45,72 CM) - ROLL WIDTH 27 IN (68,58 CM) - ROLL LENGTH 27 FT (8,22 M)

NON-WOVEN - PRICE CODE A



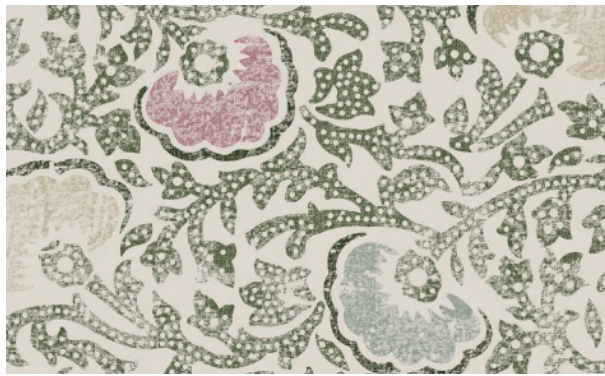
©2021 LEMIEUX ET CIE®. ALL RIGHTS RESERVED.





FONTAINE

THE WEATHERED IMPERFECTION OF AN HEIRLOOM FLORAL TOSS PROVIDES PATTERN FONTAINE'S FLOWING VINES WITH A SPIRITED AND TIMELESS SENSE OF WARMTH AND THOUGHTFUL DETAILING.



CH1440 - SHOWN ON OPPOSITE PAGE



CH1441

REPEAT 20.25 IN (51,43 CM) - ROLL WIDTH 20.5 IN (52,07 CM) - ROLL LENGTH 33 FT (10,1 M)
SURE STRIP® - PRICE CODE A



©2021 LEMIEUX ET CIE®. ALL RIGHTS RESERVED.

BLAISE

STYLIZED AND SINUOUS, PATTERN BLAISE
TAKES A LAISSEZ-FAIRE APPROACH TO BIRDS
AND BOTANICALS TO CREATE A FEELING OF
CASUAL MODERNISM.





BLAISE



CH1435 - SHOWN ON OPPOSITE PAGE



CH1436

REPEAT 17.6 IN (44,7 CM) - ROLL WIDTH 20.5 IN (52,07 CM) - ROLL LENGTH 33 FT (10,1 M)

SURE STRIP® - PRICE CODE A



©2021 LEMIEUX ET CIE®. ALL RIGHTS RESERVED.

FLEURUS

CHARMING PATTERN FLEURUS BRINGS THE VINTAGE NEEDLEWORK OF TRIBAL SUZANI TEXTILES ALIVE WHEN RENDERED AS STYLIZED, HAND-PAINTED FLORALS.



CH1430 - SHOWN ON OPPOSITE PAGE



CH1431

REPEAT 17.5 IN (44,45 CM) - ROLL WIDTH 20.5 IN (52,07 CM) - ROLL LENGTH 33 FT (10,1 M)

SURE STRIP® - PRICE CODE A



©2021 LEMIEUX ET CIE®. ALL RIGHTS RESERVED.



The Foraged Home



KOTOBİ - CH1400



previou
c ecti





KOTOBI

THE CÔTE D'IVOIRE INSPIRES A MODERN
GEOMETRIC DESIGN WHICH HONORS THE PURE
SIMPLICITY OF TRIBAL CLOTH WHEN PRINTED
IN AN ORGANIC COLOR PALETTE ON NATURAL
TEXTILE STRING.

KOTOBI



CH1400



CH1402



CH1403 - SHOWN ON
PREVIOUS PAGE

REPEAT 30 IN (76,2 CM) - ROLL WIDTH 33.25 IN (84,46 CM) - ROLL LENGTH 11.2 FT (3,41 M)
TEXTILE-STRINGS - PRICE CODE C



©2021 LEMIEUX ET CIE®. ALL RIGHTS RESERVED.





TRUDAINE

THE IDYLIC ESTATES OF FRENCH ROYALTY INSPIRE THIS
ART MODERNE SCENIC OF OPULENT FLORA AND FAUNA,
BALANCING THE FORMAT OF CLASSIC TOILE WITH
CONTEMPORARY STREAMLINE SOPHISTICATION.



CH1411

REPEAT 18 IN (45,72 CM) - ROLL WIDTH 18 IN (45,72 CM) - ROLL LENGTH 33 FT (10,1 M)

NON-WOVEN - PRICE CODE A



©2021 LEMIEUX ET CIE®. ALL RIGHTS RESERVED.

LAMARTINE

THIS SKETCH FLORAL TOSS PATTERN HAS A GRACEFUL PURITY THAT CAPTURES ITS ROMANTIC ESSENCE THROUGH GENTLE POETIC MOTION FOR AN ARTISTIC TOUCH OF LIVABLE LUXURY.







LAMARTINE



CH1412

REPEAT 25.25 IN (64,13 CM) - ROLL WIDTH 27 IN (68,58 CM) - ROLL LENGTH 27 FT (8,2 M)
PAPERWEAVE - PRICE CODE B



©2021 LEMIEUX ET CIE®. ALL RIGHTS RESERVED.

SAVARIN

ETHEREAL RADIATING RINGS OF AU COURANT COLOR FRAMED
BY GENTLY CURVING LEAVES CREATE A DREAMY BOHEMIAN
DAMASK DERIVED FROM AN ORIGINAL VINTAGE-MODERN
BOTANICAL GOUACHE PAINTING.



CH1408 - SHOWN ON OPPOSITE PAGE



CH1409



CH1410

REPEAT 15 IN (38,1 CM) - ROLL WIDTH 18 IN (45,72 CM) - ROLL LENGTH 33 FT (10,1 M)
NON-WOVEN - PRICE CODE A



©2021 LEMIEUX ET CIE®. ALL RIGHTS RESERVED.



FERRANDI 6-9



CH1420



CH1421

BARBIER 10-11



CH1425



CH1426

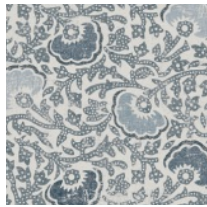


CH1427

FONTAINE 12-13



CH1440



CH1441

BLAISE 14-17

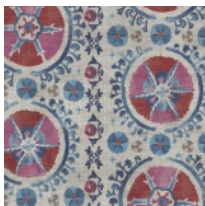


CH1435

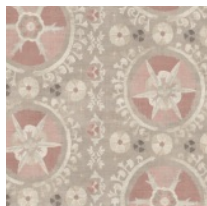


CH1436

FLEURUS 18-19



CH1430



CH1431

KOTOBI 22-25



CH1400



CH1402



CH1403

TRUDAINE 26-27



CH1411

LAMARTINE 28-31



CH1412

SAVARIN 32-33



CH1408



CH1409



CH1410

LEMIEUX ET CIE

ABOUT THE COLLECTION

LEMIEUX ET CIE is luxury in perfect minimalism, edited to be richly layered, yet effortlessly relaxed. This is deeply personal style built on an obsessive dedication to quality, craftsmanship, and the perfection found in the imperfect.

ABOUT CHRISTIANE LEMIEUX

Christiane Lemieux is the creative force behind her assemblage of lifestyle brands. Every detail within her collections has a sense of casual affluence and well-traveled taste. Imbued with her unique design signature, they are distinctive yet approachable, refined by curation, and enriched with a sense of effortless style.

SURE STRIP®

The newest generation of wallcoverings, Sure Strip® Wallpapers utilize a special high performance paper in combination with a technically advanced adhesive formulation to make installation easy and future removal even easier.

• REVOLUTIONARY NEW PAPER • ENVIRONMENTALLY FRIENDLY INKS • PREPASTED – WASHABLE

Sure Strip® Wallpapers are the easiest wallpapers you'll ever put up...or take down.

This collection features multiple product types.

ROLL SIZE

Unless noted with an asterisk (*), all double rolls of wallpaper in this collection are:
 27" wide x 27' long totaling 60.8 sq. ft. (68,5 cm x 8,2 m or 5,6 m²)
 *20.5" wide x 33' long totaling 56.4 sq.ft. (52,1 cm x 10,1 m or 5,3 m²)
 **18" wide x 33' long totaling 49,5 sq. ft. (45,7 cm x 10,1 m or 4,6 m²)
 ***2 panels per bolt, each panel measures 33.25" wide x 11.2' long

IMPORTANT

When you receive your order, please check to make sure that the design, color and quantity are correct. Also, please examine the wallcoverings for imperfections before cutting and hanging. We will replace defective merchandise, but will not be responsible for labor costs. Discolorations caused by unneutralized plaster or improper wall preparation are also not covered by this warranty.

RETURNS





















Wallcovering returns must be pre-authorized and are subject to a restock handling charge plus return freight. All returns must be made within 60 days of our shipping date. Cut rolls are not acceptable for credit.

NOTICE

All designs and graphic images contained herein, are Copyright 2021 York Wallcoverings, Inc., York, PA U.S.A. All rights reserved.

 <ul style="list-style-type: none"> • Low VOC • No Ozone Depletion • No Cadmium or Mercury • Smokeless, Water Based Inks • Managed Renewable Forests 	 <p>York Wallcoverings is a proud member of the U.S. Green Building Council.</p> <p>"The 'USGBC Member Logo' is a trademark owned by the U.S. Green Building Council and is used by permission. The logo signifies only that York Wallcoverings is a USGBC member; USGBC does not review, certify or endorse the products or services offered by its members".</p>	 <p>Find a paper hanger at www.wallcoveringinstallers.org</p>
--	---	--

EXPLANATION OF SYMBOLS

WASHABILITY/SPONGEABILITY				COLOR FASTNESS OF LIGHT				
								
washable	extra washable	scrubbable	spongeable at time of hanging	moderate	satisfactory	good	very good	
PATTERN MATCH				MEANS OF APPLICATION				
								
random match	straight match	drop match	reverse alternate lengths	paste the paper	paste the wall	prepastored	spray and hang	peel and stick
METHOD OF REMOVAL								
								
strippable	peelable	wet removable						