



RRD

RONALD REDDING DESIGNS®
ARTS & CRAFTS

YORK
WALLCOVERINGS



RONALD REDDING DESIGNS®
ARTS & CRAFTS

This collection of fine wallcoverings is dedicated to the vision of the Arts and Crafts movement. Featuring designs inspired by archival and original art created by design pioneer C.F.A. Voysey, these works exemplify the concepts of simplicity, craftsmanship, and the use of natural materials, which continue their impact on every aspect of today's interiors.





DESIGN & MANUFACTURING

The York Wallcoverings design studio's innovative styling marries each design to the perfect technologies. With every type of wallpaper printing press available in house at York, design interpretation through screen, gravure, rotogravure, surface, embossed vinyl, and digital presses become a canvas for self-expression. This essential hands-on creativity pervades the York manufacturing process, bringing each artistic vision to print reality.

York manufactures all wallcovering product types, including residential, commercial grade, high performance, acoustical, and peel and stick. Here, York's combined technologies, handcrafting, and authentic surface print techniques create a manufacturing mastery of heritage and innovation. Our design studio, manufacturing process, and distinguished heritage make York the preeminent provider of fine wallcoverings in the interior design industry.



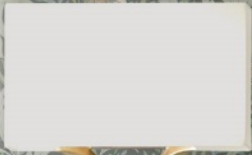
Drawing from our past, the York Archives provides access to thousands and thousands of document designs dating back to the early 18th century. York's revered Archives are an inexhaustible source of inspiration and reference for the artists, designers, and stylists who create the beautiful images that become York wallpapers.

Look for this logo throughout the catalog to find York Archives designs.



Surface Print is the oldest automated printing method still in use today which utilizes raised images on an engraved roller to transfer colors to a continuous reel of paper. A heavy lay-down of inks, wet-on-wet printing, and a less exact image outline give this type of printing a very distinct look that is impossible to duplicate with modern presses.

Look for this logo throughout the catalog to find Surface Print Designs.





WOODLAND TAPESTRY

Classic acanthus scrolls, crowned herons, and leaping fawns create a romantic depiction of forest glen in archival pattern Woodland Tapestry.

WOODLAND TAPESTRY



AC9121 - Metallic Accent



AC9122 - Shown On Opposite Page



AC9123 - Metallic Accent



AC9124 - Shown On Previous Page

Repeat 25.25 in (64,13cm) - Roll Width 27 in (68,58 cm) - Roll Length 27 ft (8,22 m)
Non-Woven - Price Code A



©Design Copyright York Wallcoverings, Inc., All Rights Reserved.



Derived from a painting ca. 1910 found within an original German print collection acquired by York.



York Wallcoverings Archive



TRACERY BLOOMS

Outlined in burnished metallic, pattern Tracery Blooms' simplicity of line, and elegant, organic blooms and stems, is a modern interpretation of a classic floral motif.



AC9111 - Metallic Accent



AC9112 - Metallic Accent



AC9113 - Shown On Opposite Page
Metallic Accent



AC9114 - Metallic Accent

Repeat 25.25 in (64,13 cm) - Roll Width 27 in (68,58 cm) - Roll Length 27 ft (8,22 m)
Non-Woven - Price Code A



©Design Copyright York Wallcoverings, Inc., All Rights Reserved.

CALLUNA

The watercolor graphic of pattern Calluna is translated from an original C.F.A. Voysey wallpaper design into a curvaceous botanical with touches of burnished metallic.



AC9141 - Shown On Opposite Page



AC9142



AC9143



AC9144



AC9145 - Metallic Accent

Repeat 24 in (60,96 cm) - Roll Width 27 in (68,58 cm) - Roll Length 27 ft (8,22 m)
Non-Woven - Price Code A



RIBA Collections



Derived from an original C.F.A. Voysey wallpaper design ca.1900, featuring a Nouveau patterning of natural leaves and blossoms.



ROWAN

Pattern Rowan, named for the shrub's reddened fruit, captures the natural themes of leaves and berries in a luxurious toss of layered stems.

ROWAN



AC9131 -Shown On Opposite Page



AC9132



AC9133



AC9134



AC9135



AC9136

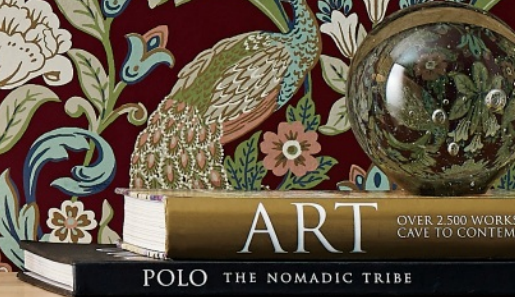


AC9137

Repeat 24 in (60,96 cm) - Roll Width 27 in (68,58 cm) - Roll Length 27 ft (8,22 m)
Non-Woven - Price Code A







PLUME DYNASTY

Pattern Plume Dynasty is a lush floral and peacock damask with both touches of modern metallic and old-world charm.



AC9101



AC9102 - Metallic Accent



AC9103



AC9104



AC9105



AC9106 - Shown On Opposite Page
Metallic Accent

Repeat 25.25 in (64,13 cm) - Roll Width 27 in (68,58 cm) - Roll Length 27 ft (8,22 m)
Non-Woven - Price Code A



©Design Copyright York Wallcoverings, Inc., All Rights Reserved.



VOYSEY FROM THE V&A

The V&A's collection represents some of the best names of the British Arts and Crafts Movement, including works by the architect-designer C.F.A.Voysey, who advocated honest design of only the finest quality and craftsmanship.

York Wallcoverings has produced two patterns from the V&A's archive based on the scale of the original designs and natural Arts & Crafts colour palette, updated to work in contemporary homes.

Easily recognizable as a precursor of the Art Nouveau style, Pinecone Ribbon is a stylized pattern depiction of simple cornflowers created in 1898 for a woven cloth by architect-designer, C.F.A. Voysey.
Original Artwork Shown On Left



Influenced by William Morris' principles of incorporating lush flora and fauna into his work, Butterfly Garden is a spectacular pattern created for a furnishing fabric in 1918 by architect-designer, C.F.A. Voysey. Original Artwork Shown Above





V&A





V&A

BUTTERFLY GARDEN | Stylized bird and berry pattern by C.F.A. Voysey designed for a furnishing fabric in 1918.

BUTTERFLY GARDEN

Butterfly Garden is a distinctive pattern created for interiors in 1918, which follows the design principles of William Morris' rhythmic use of natural motifs yet incorporates the C.F.A. Voysey signature of sophisticated simplicity.



AC9161 - Metallic Accent



AC9162 - Metallic Accent



AC9163 - Metallic Accent



AC9164



AC9165 - Shown On Opposite Page

Repeat 20.5 in (52,07cm) - Roll Width 20.5 in (52,07 cm) - Roll Length 33 ft (10,05 m)
Non-Woven - Price Code B



Surface Print



©Victoria and Albert Museum, London

YORKWALLCOVERINGS.COM 23

PINECONE RIBBON

Pinecone Ribbon recreates a peaceful, simplistic drawing of stylized undulating leaves and cornflower blooms which clearly illustrates C.F.A. Voysey's influence on the foundations of Art Nouveau.



AC9171 - Shown On Opposite Page



AC9172



AC9173 - Metallic Accent



AC9174 - Metallic Accent



AC9175

Repeat 24 in (60,96 cm) - Roll Width 27 in (68,58 cm) - Roll Length 27 ft (8,22 m)
Non-Woven - Price Code A





Original botanical inspired pattern created in 1898 by C.F.A. Voysey for a woven cloth. | PINECONE RIBBON





Inspired by an original C.F.A. Voysey design available via private collection.

CANTERBURY BELLS

The colorful, shimmering bell-shaped blossoms and graceful leaves of this popular flower of the same name, inspires archival pattern Canterbury Bells.



AC9201 - Shown On Opposite Page



AC9202



AC9203



AC9204 - Metallic Accent



AC9205



AC9206 - Metallic Accent

Repeat 24 in (60,96 cm) - Roll Width 27 in (68,58 cm) - Roll Length 27 ft (8,22 m)
Non-Woven - Price Code A



OAKWOOD GROVE

Inspired by the wide, scenic panels of the Arts and Crafts period, forest pattern Oakwood Grove is printed upon a burnished metallic ground to add sophistication and shimmer.





OAKWOOD GROVE



AC9221D - Shown On Opposite Page - Metallic Accent



AC9222D - Shown On Previous Page - Metallic Accent

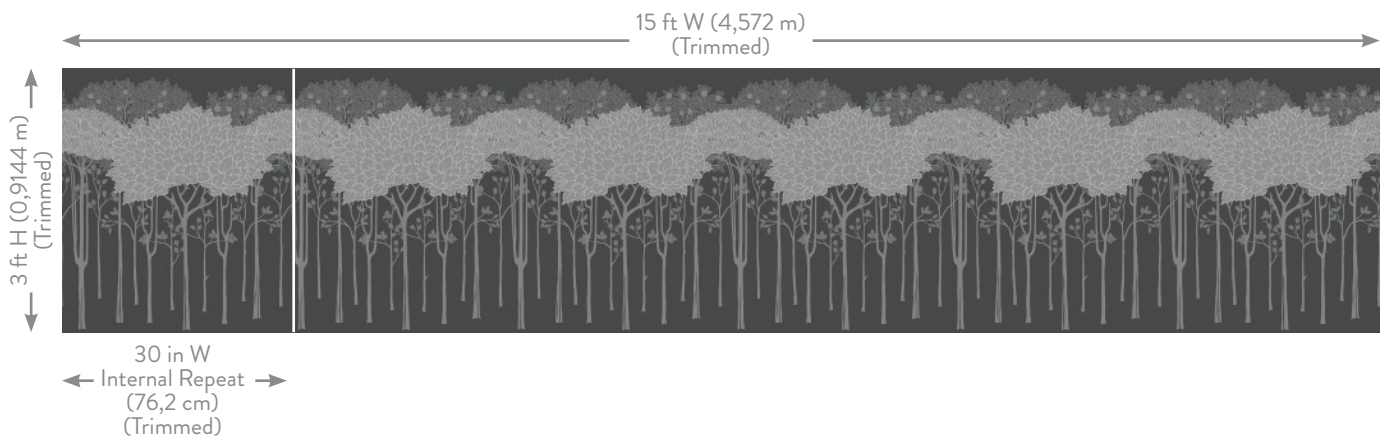
Overall Size - 1 Panel Dado: 36 in H x 182 in W (91,44 cm x 462,28 cm) (Untrimmed) - Price Code D
Dado comes untrimmed, trims to: 36 in H x 180 in W (91,44 cm x 457,2 cm)
Endless Repeat - Metallic Foil On Non-Woven



©Design Copyright York Wallcoverings, Inc., All Rights Reserved.



Shown With Burnished Patina - AC9211 Above Moulding

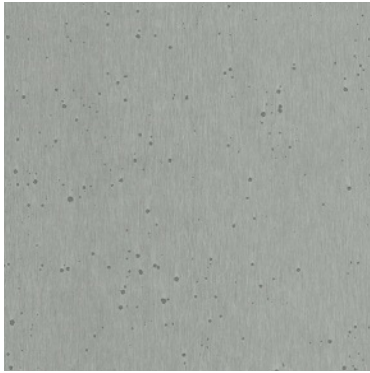




AD at 100
A
ANNALS

BURNISHED PATINA

Pattern Burnished Patina is a simple, metallic ground with the character of an aged, lustrous finish.



AC9211 - Shown On Page 31
Metallic Accent



AC9212 - Metallic Accent



AC9213 - Metallic Accent



AC9214 - Shown On Opposite Page
Metallic Accent

Roll Width 38 in W (96,52 cm) (Untrimmed) - Price Code C
This product comes untrimmed, trims to: 36 in W (91,44 cm) - Metallic Foil on Non-Woven



LOCKWOOD DAMASK

The Arts and Crafts vision of beautiful, natural design is nowhere more present than in the lush floral pattern Lockwood Damask.



AC9191



AC9192



AC9193



AC9194



AC9195 - Shown On Opposite Page

Repeat 25.25 in (64,13 cm) - Roll Width 27 in (68,58 cm) - Roll Length 27 ft (8,22 m)
Non-Woven - Price Code A



©Design Copyright York Wallcoverings, Inc., All Rights Reserved.



THE NEW YORK TIMES
MAGAZINE



Inspired by a surface printed botanical wallpaper reference from the turn of the century.



York Wallcoverings Archive

MEADOW FLOWERS

The art of pattern Meadow Flowers translates from a beautifully detailed original wallpaper from the turn of the century, discovered within the York Wallcoverings archive.



AC9151 - Shown On Opposite Page



AC9152 - Metallic Accent



AC9153



AC9154



AC9155

Repeat 25.25 in (64,13 cm) - Roll Width 27 in (68,58 cm) - Roll Length 27 ft (8,22 m)
Non-Woven - Price Code A



CRAFTSMAN

This iconic geometric shape from the Arts and Crafts movement is softened by creating a tactile, artisanal feel in pattern Craftsman.







CRAFTSMAN



AC9181



AC9182 - Shown On Opposite Page



AC9183 - Metallic Accent



AC9184



AC9185



AC9186

Repeat 25.25 in (64,13 cm) - Roll Width 27 in (68,58 cm) - Roll Length 27 ft (8,22 m)
Non-Woven - Price Code A



Surface Print



Woodland Tapestry

4-7



AC9121



AC9122



AC9123



AC9124

Tracery Blooms

8-9



AC9111



AC9112



AC9113



AC9114

Calluna

10-11



AC9141



AC9142



AC9143



AC9144



AC9145

Rowan

12-15



AC9131



AC9132



AC9133



AC9134



AC9135



AC9136



AC9137

Plume Dynasty

16-17



AC9101



AC9102



AC9103



AC9104



AC9105



AC9106

Butterfly Garden

20-23



AC9161



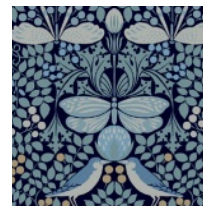
AC9162



AC9163



AC9164



AC9165

Pinecone Ribbon

24-25



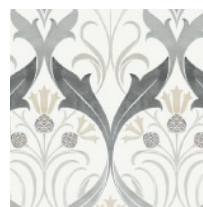
AC9171



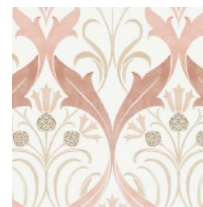
AC9172



AC9173



AC9174



AC9175

Canterbury Bells

26-27



AC9201



AC9202



AC9203



AC9204



AC9205



AC9206

Oakwood Grove

28-31



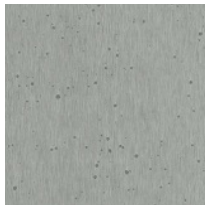
AC9221D



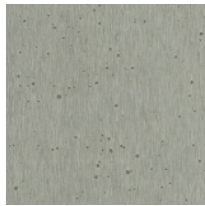
AC9222D

Burnished Patina

32-33



AC9211



AC9212



AC9213



AC9214

Lockwood Damask

34-35



AC9191



AC9192



AC9193



AC9194



AC9195

Meadow Flowers

36-37



AC9151



AC9152



AC9153



AC9154



AC9155

Craftsman

38-41



AC9181



AC9182



AC9183



AC9184



AC9185



AC9186

RONALD REDDING DESIGNS®

ARTS & CRAFTS

ABOUT THE COLLECTION

This collection of fine wallcoverings is dedicated to the vision of the Arts and Crafts movement. Featuring designs inspired by archival and original art created by design pioneer C.F.A. Voysey, these works exemplify the concepts of simplicity, craftsmanship, and the use of natural materials, which continue their impact on every aspect of today's interiors.

RONALD REDDING DESIGNS

Ronald Redding wallpaper designs are the essence of the modern masterclass, artfully blending the timeless past with pioneering innovation. His signature air of effortless luxury is celebrated by design and industry professionals alike as the cornerstone of neo-traditional style.

VICTORIA AND ALBERT MUSEUM

Celebrating creativity, the V&A is the world's leading museum of art, design and performance. Discover more at vam.ac.uk

STICKLEY FURNITURE

Deeply rooted in history while updating styles for today's homes, Stickley has a reputation for quality, craftsmanship, design, and lasting value earned over 120 years of furniture making. Learn more at stickley.com.

NON-WOVEN

Non-woven is a blend of compressed natural cellulose and synthetic fibers that forms a high-quality wallcovering base. It does not expand and contract with moisture yet is breathable and resistant to tearing. Seams match simply, with paste being applied either to the wallpaper back or directly to the wall. Non-woven hangs and repositions with ease and removes in full strips. Once applied, the finish has a textural hand associated with upmarket installations.

ROLL SIZE

Unless noted with an asterisk (*), all double rolls of wallpaper in this collection are:

27" wide x 27' long totaling 60.8 sq. ft (68,5 cm x 8,2 m or 5,6 m²)

*20.5" wide x 33' long totaling 56.4 sq. ft (52,1 cm x 10,1 m or 5,3 m²)

**36" wide trimmed x 24' long totaling 72 sq. ft (91,4 cm x 7,3 m or 6,6 m²) .

***These are Dados. Please see roomsets for dimensions.

IMPORTANT

When you receive your order, please check to make sure that the design, color and quantity are correct. Also, please examine the wallcoverings for imperfections before cutting and hanging. We will replace defective merchandise, but will not be responsible for labor costs. Discolorations caused by unneutralized plaster or improper wall preparation are also not covered by this warranty.

RETURNS





















Wallcovering returns must be pre-authorized and are subject to a restock handling charge plus return freight. All returns must be made within 60 days of our shipping date. Cut rolls are not acceptable for credit.

NOTICE

All designs and graphic images contained herein, are Copyright 2022 York Wallcoverings, Inc., York, PA U.S.A. All rights reserved.

 <p>eco-decor™</p> <ul style="list-style-type: none"> • Low VOC • No Ozone Depletion • No Cadmium or Mercury • Smokeless, Water Based Inks • Managed Renewable Forests 	 <p>USGBC MEMBER</p> <p>York Wallcoverings is a proud member of the U.S. Green Building Council.</p> <p>"The 'USGBC Member Logo' is a trademark owned by the U.S. Green Building Council and is used by permission. The logo signifies only that York Wallcoverings is a USGBC member; USGBC does not review, certify or endorse the products or services offered by its members".</p>	 <p>WIA Wallcovering Installers Association</p> <p>Find a paper hanger at www.wallcoveringinstallers.org</p>
--	---	---

EXPLANATION OF SYMBOLS

WASHABILITY/SPONGEABILITY				COLOR FASTNESS OF LIGHT				
 washable	 extra washable	 scrubbable	 spongeable at time of hanging	 moderate	 satisfactory	 good	 very good	
PATTERN MATCH				MEANS OF APPLICATION				
 random match	 straight match	 drop match	 reverse alternate lengths	 paste the paper	 paste the wall	 prepasted	 spray and hang	 peel and stick
METHOD OF REMOVAL								
 strippable	 peelable	 wet removable						