

**MODERNE**



YORK

## About The Brand

Stacy  
Garcia<sup>®</sup>  
HOME

Livable yet style-centric, Stacy Garcia Home brings an unparalleled layering of color and pattern. One of the leading voices in the design industry, Garcia is an internationally renowned designer, entrepreneur, and trend forecasting expert known for her signature bold, colorful patterns.



YORK

# About High Performance



Scrubbable, stain resistant and more durable than paint, high performance wallcoverings work hard to protect walls. Patterns suggestive of specialty goods and materials make these finishes as beautiful as they are durable. Look for the HIGH PERFORMANCE logo from York for the confidence of commercial grade, designed for residential and light commercial spaces.



YORK

## About The Collection

An urbane artistic portfolio of polished elegance and contemporary verve designed with the signature stylings of lifestyle impresario Stacy Garcia.

## Keywords

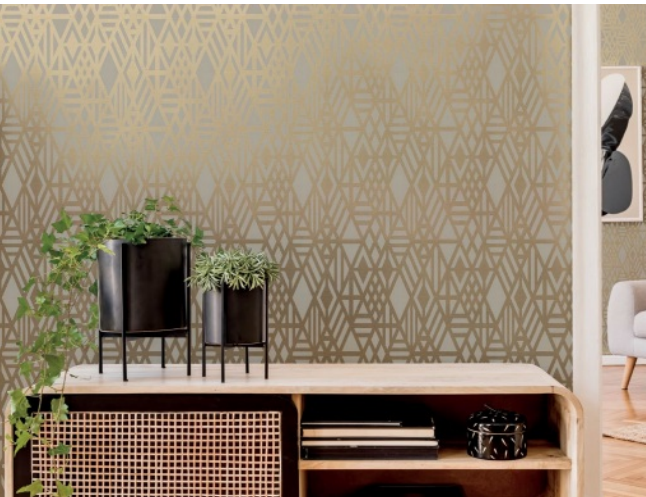
Geometrics, diamonds, metallic, heavy emboss, burnished, weave, woven, leaves, herringbone, organic botanical, silhouette, concrete, grommets, horizontal stripes





YORK

# Key Images





YORK

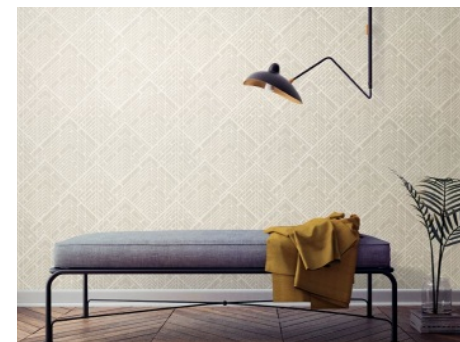
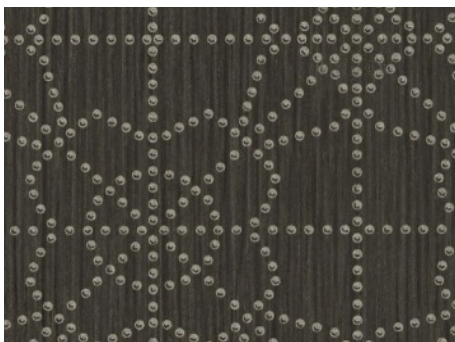
# Stacy Garcia Moderne Video

[Click to watch video.](#)



# Products

YORK





YORK

# Why Stacy Garcia Moderne?

- Industrial inspirations still influence geometrics  
(Pattern **Wrought Iron, Architect, Conservation**)
- Organic influences become more abstract  
(Patterns **Partridge, Brilliant Partridge, Emblem**)
- Natural silhouettes soothe the hard edge of modern  
(pattern **Sprig**)
- Texture goes deeper, adding strong dimensionality  
(Patterns **Partridge, Gilded**)
- Metallic brilliance adds burnished minerals to their palette  
(Patterns **Edge, Brilliant Cut, Sacred Geometry**)
- Rough weaves and suiting woolens add cloth inspiration to the wall  
(Patterns **Randing Weave, Blazer, Panama Weave**)
- The industry obsession with horizontal stripes continues to dominate  
(Pattern **New Horizons, Convergence**)