

IN HOUSE COPY

Murals

resource library

VOLUME I

YORK
WALLCOVERINGS



YORK[®]
WALLCOVERINGS

Murals

Make a statement

The York Resource Library collections are a treasury of the best patterns within the York style portfolio, creating a wallcovering design library of broad scope. Thoughtfully curated in familiar design categories from grass cloth to geometric, each collection streamlines sourcing the perfect pattern, texture or specialty to actualize your ideal space.

Mural Resource Library Volume 1 brings the very best in classic and modern motifs to the bold impact scale of mural applications. Incorporating themes which encompass classic, modern, scenic and fine art motifs, every style category can be represented with the personality and strong statement of a large-scale installation. Now including endless repeat murals for full room wraps, as well as traditional single wall and ceiling installations, the creative possibilities are endless.

Designed to Inspire

YORKWALLCOVERINGS.COM

York Wallcoverings Factory 1900's



over a century of exceptional design.

Designed to Inspire

authentic handcrafting and artisanship

York Wallcoverings' family of employees have an integrity and commitment to service and quality unsurpassed in the wallcovering industry. York stands alone in experience and knowledge among its peers. Our authentic handcrafting and artisanship dates back over more than a century. It is this design heritage, working hand in hand with the latest in modern technologies, which defines York Wallcoverings' portfolio as the most diverse within the wallpaper industry today.

Designed to Inspire

YORKWALLCOVERINGS.COM



heritage and craftsmanship

Design & Manufacturing

innovative styling and fine artistry

Long recognized for its collective talent, the York Wallcoverings design studio maintains a reputation for innovative styling and fine artistry. With design expertise in all available wallcovering product types including residential, commercial, high performance and peel & stick, York's creative studio staff is in the unique position to layer design, technologies and manufacturing innovations to bring their vision to print reality.

As the exclusive provider of rare Surface Print technologies in North America, and the only manufacturer with all five wallpaper printing types housed under one roof, York stands alone in experience and knowledge among its peers; utilizing authentic, genuine handcrafting and artisanship dating back over more than a century.

It is this design heritage which defines York Wallcoverings portfolio as the most diverse within the wallcoverings industry today. York's visionary adaptability and resilience withstands the test of time, steadfast in dedication to excellence of design and innovation with a focus on the future.

Designed to Inspire

YORKWALLCOVERINGS.COM

Table of Contents

Find your perfect mural here...

Designed to Inspire

YORKWALLCOVERINGS.COM



LINGERING GARDEN MURAL - MU0313M

*PHOTO REPRESENTS 2 MATCHED MURALS SIDE BY SIDE

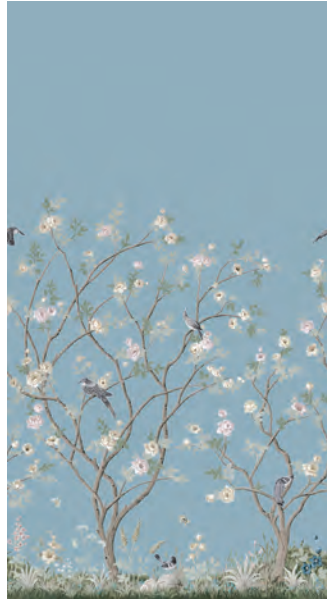


Lingering Garden Mural

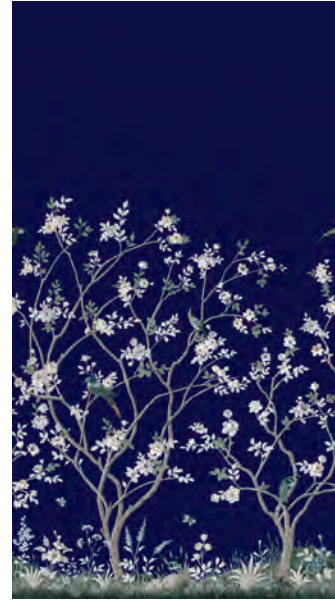
THE CLASSIC ELEGANCE OF LINGERING GARDEN MURAL CREATES A
PANORAMIC CHINOISERIE THEME OF NATURAL CHERRY BLOSSOM
BRANCHES AND ELEGANTLY NESTING BIRDS.



MU0313M



MU0314M



MU0315M



MU0316M



MU0317M



*MU0317MSISAL

Overall Size: 5.54ft width x 10.2ft height (66.5in width x 122.4in height)
Mural Installs in 2 Panels | Panels are 33.25in (84,45cm) wide & sequentially numbered for ease of installation
Endless Repeat | Straight Match | Non-Woven or Sisal
Paste the Wall | Extra Washable | Very Good Colorfastness | Strippable
*MU0317MSISAL is Sisal and is not washable



IMPRESSIONIST FLORAL MURAL - MU0247M



Impressionist Floral Mural

THE BRUSHSTROKES AND MOVEMENT SYNONYMOUS WITH IMPRESSIONIST
ART DEFINE IMPRESSIONIST FLORAL MURAL AS A MODERN MASTERPIECE.



MU0246M



MU0247M



MU0248M

Overall Size: 12.625ft width x 10.2ft height (151.5in width x 122.4in height)
Mural Installs in 6 Panels | Panels are 25.25in (64,14 cm) wide & sequentially numbered for ease of installation
Straight Match | Non-Woven
Paste the Wall | Extra Washable | Very Good Colorfastness | Strippable



FLOATING GARDENS MURAL - MU0262M







Floating Gardens Mural

EXOTIC TROPICAL FOLIAGE CREATES THE LUSH WETLANDS OF FLOATING GARDENS MURAL, FOR AN UNEXPECTED BOTANICAL WITH THE SOPHISTICATION OF CLASSIC ASIAN SCENIC PATTERNS.



MU0262M



MU0263M

Overall Size: 12.625ft width x 10.2ft height (151.5in width x 122.4in height)
Mural Installs in 6 Panels | Panels are 25.25in (64,14cm) wide & sequentially numbered for ease of installation
Straight Match | Non-Woven
Paste the Wall | Extra Washable | Very Good Colorfastness | Strippable



PINWHEEL STRIPE MURAL - MU0243M



Pinwheel Stripe Mural

A GEOMETRIC COMPRISED OF FRACTURED HORIZONTAL STRIPES MAKE
PINWHEEL STRIPE MURAL A PLAYFUL, COLORFUL TAKE ON
BASIC LINES AND DIAMONDS.



MU0242M



MU0243M

Overall Size: 12.625ft width x 10.2ft height (151.5in width x 122.4in height)
Mural Installs in 6 Panels | Panels are 25.25in (64,14cm) wide & sequentially numbered for ease of installation
Endless Repeat | Straight Match | Non-Woven
Paste the Wall | Extra Washable | Very Good Colorfastness | Strippable



PROVINCIAL SCENIC MURAL - MU0270M







Provincial Scenic Mural

PROVINCIAL SCENIC MURAL REPLICATES A EUROPEAN ETCHING PRINT
DEPICTING A SOOTHING, WOODED PANORAMA.

- MURALS VOL. 1 COLLECTION -



MU0270M



MU0271M



MU0272M

Overall Size: 12.625ft width x 9ft height (151.5in width x 108in height)
Mural Installs in 6 Panels | Panels are 25.25in (64,14cm) wide & sequentially numbered for ease of installation
Endless Repeat | Straight Match | Non-Woven
Paste the Wall | Extra Washable | Very Good Colorfastness | Strippable



SAFE HARBOR MURAL - MU0319M
PHOTO REPRESENTS 2 MATCHED MURALS SIDE BY SIDE



Safe Harbor Mural

A CLASSICAL PORT OF SAILING SHIPS AND WARM,
SOUTHERN CHARM MAKES SAFE HARBOR MURAL A DESIGN CENTERPIECE
WITH A SENSE OF CASUAL ELEGANCE.

- MURALS VOL. 1 COLLECTION -



MU0318M



MU0319M

Overall Size: 12.625ft width x 10.2ft height (151.5in width x 122.4in height)
Mural Installs in 6 Panels | Panels are 25.25in (64,14cm) wide & sequentially numbered for ease of installation
Endless Repeat | Straight Match | Non-Woven
Paste the Wall | Extra Washable | Very Good Colorfastness | Strippable

Seek refuge within a
natural surround, for a
sense of meditation and
calming serenity.

MISTY MOUNTAIN MURAL - AF6598M





Misty Mountain Mural

THE TRANQUIL SCENERY OF MISTY MOUNTAIN MURAL IS INSPIRED BY
CHINESE LANDSCAPE PAINTINGS WHICH EMBODY SEEKING SOLACE FROM
SOCIETY WITHIN THE NATURAL WORLD.



AF6597M



AF6598M

Overall Size: 6.31ft width 11.2ft height (75.75in width x 134.4in height)
Mural Installs in 3 Panels | Panels are 25.25in (64,14cm) wide & sequentially numbered for ease of installation
Endless Repeat | Straight Match | Non-Woven
Paste the Wall | Extra Washable | Very Good Colorfastness | Strippable

Imagination takes flight
with panoramic murals
that bring travel and
discovery home.









Tropical Panoramic Mural

PALM LEAVES AND EXOTIC WATER BIRDS MAKE TROPICAL PANORAMIC MURAL AN EVERYDAY PARADISE FOR THE STAY-HOME-GETAWAY OF A LIFETIME.



MU0254M

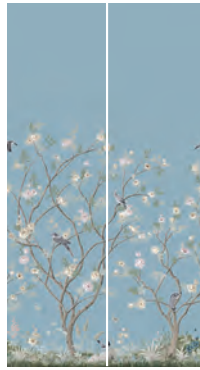


MU0255M

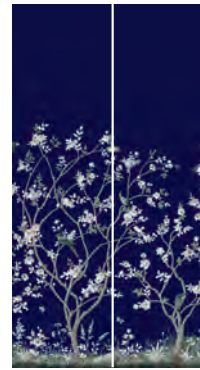
Overall Size: 10.5ft width x11.2ft height (126.25in width x 134.4in height)
Mural Installs in 5 Panels | Panels are 25.25in (64,14cm) wide & sequentially numbered for ease of installation
Endless Repeat | Straight Match | Non-Woven
Paste the Wall | Extra Washable | Very Good Colorfastness | Strippable



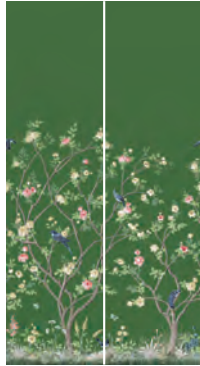
MU0313M



MU0314M



MU0315M



MU0316M



MU0317M



MU0317MSISAL



MU0246M



MU0247M



MU0248M



MU0262M



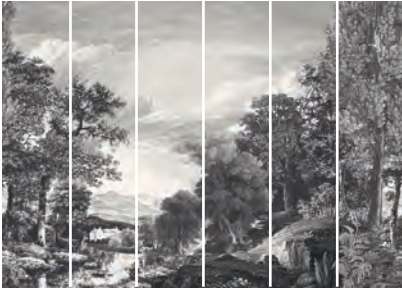
MU0263M



MU0242M



MU0243M



MU0270M



MU0271M



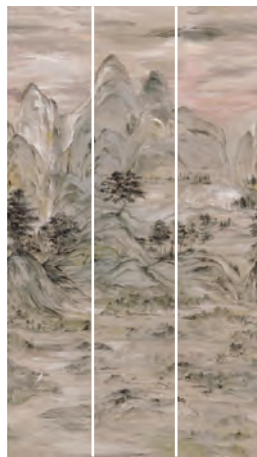
MU0272M



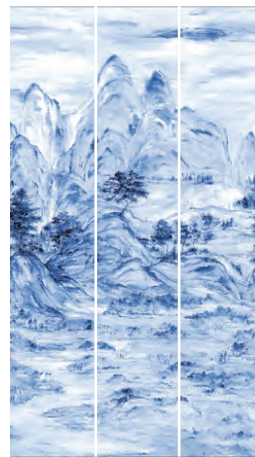
MU0318M



MU0319M



AF6597M



AF6598M



MU0254M



MU0255M

designed to inspire